

HCV6 SERIES

6 WAY CHANGEOVER VALVES

INTRODUCTION

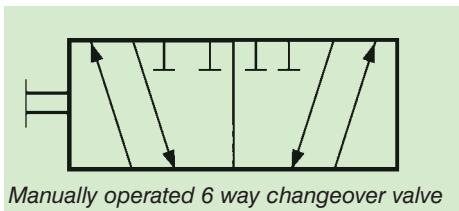
Holmbury HCV6 Series, 6 way changeover valves have been specifically designed for use in the hammer circuits of excavators. They have trunnion mounted balls which enable them to withstand the high pressure pulses generated by these applications. The valves are neat and compact and fit on the boom within a small space envelope.

The main advantages are:

- 1 They avoid the need to connect and disconnect pipelines.
- 2 Avoid oil spillage.
- 3 Allow a quick and easy changeover between circuits - with the engine running and the hydraulic lines pressurised.
- 4 Faster changeover for greater productivity and safer operation.
- 5 Totally leak free between ports.
- 6 Highly tolerant to dirt and contamination.

For excavators without a hammer circuit, please consult Holmbury for technical advice.

VALVE FUNCTION



APPLICATIONS

HCV6 Series valves are ideally suited to mobile plant and industrial applications, particularly those involving high pressure pulses. Also general applications where a robust, high pressure changeover valve is required.

CONSTRUCTION

- ◆ Body and connector are zinc plated steel.
- ◆ Handle - steel forging, zinc plated.
- ◆ Ball seals - DELRIN (polyacetalic resin)
- ◆ Shaft seal - nitrile.



Holmbury HCV6 changeover valve



Holmbury HCV6 changeover valve mounted on an excavator arm

TECHNICAL DETAILS

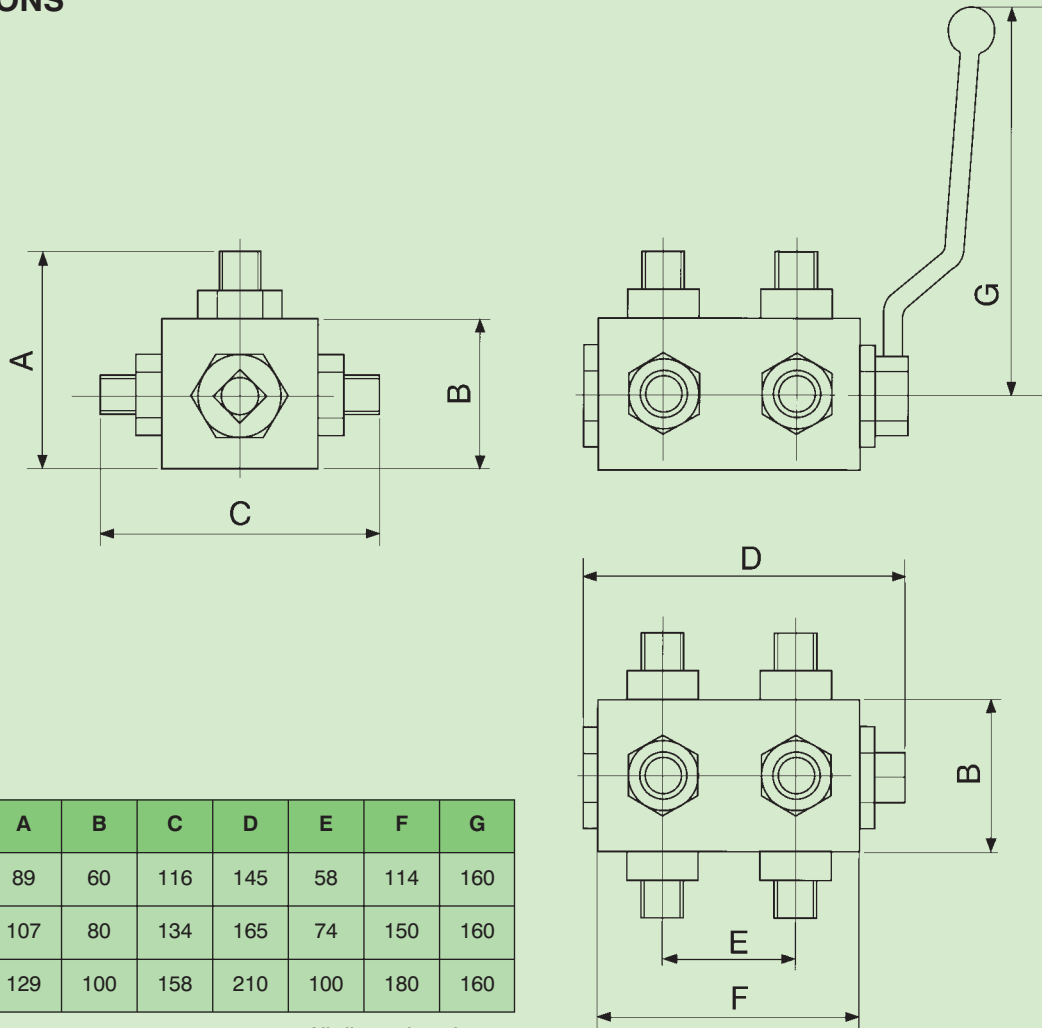
- ◆ Pressure rating - up to 500 bar continuous.
- ◆ Operating fluid - mineral oil.
- ◆ Handle travel - 90° arc.

SPECIAL TYPES

We are always pleased to discuss customer requirements for non-standard valves. Please ask for our Technical Sales Department.

HCV6 SERIES, 6 WAY CHANGEOVER VALVES

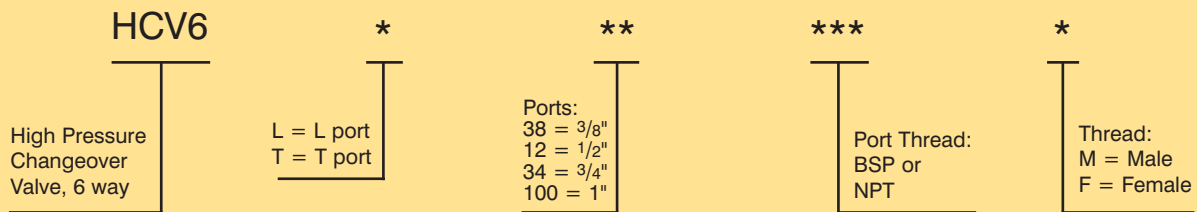
DIMENSIONS



Size	A	B	C	D	E	F	G
3/8 - 1/2"	89	60	116	145	58	114	160
1/2 - 3/4"	107	80	134	165	74	150	160
3/4 - 1"	129	100	158	210	100	180	160

All dimensions in mm

ORDER CODES



Other port sizes available,
contact Technical Office.