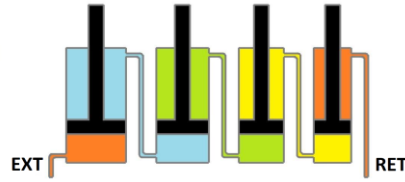


# HP Rephasing Cylinder Range - 1/2" Increment



## HP Rephasing Cylinder - 8" (203mm) Stroke

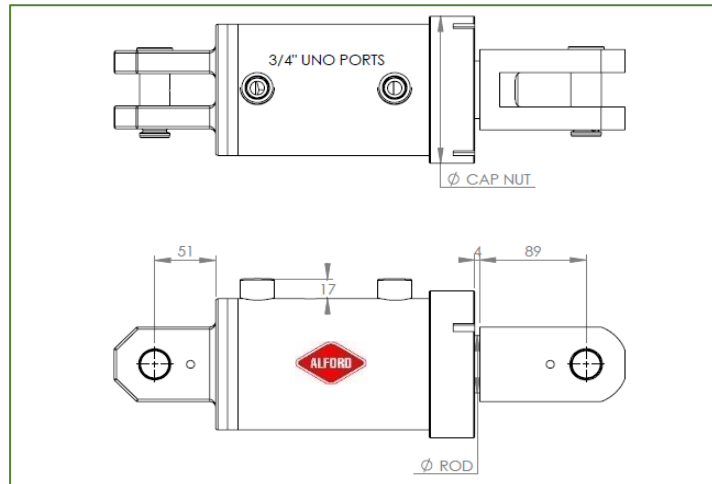
Part Code	Bore Size	Rod Size	Pin Size	Differential Force	Closed		Open		Description	Buckle Load
					Tonne	inch	mm	inch		
HP30A08	3"	1.5"	1"	2.41	20.25	514	28.25	717	Maximum Pressure: 3000psi (207 bar)	41.7
HP35A08	3.5"	1.75"		3.28						77.3
HP40A08	4"	50mm		4.15						123.6
HP45A08	4.5"	2"	1.25"	4.28	20.25	514	28.25	717	Ports 3/4" UNO	131.8
HP50A08	5"	55mm		5.02						181.0
HP55A08	5.5"	2.25"		5.42						211.2
HP60A08	6"	60mm		5.98						256.5

## HP Rephasing Cylinder - 12" (305mm) Stroke

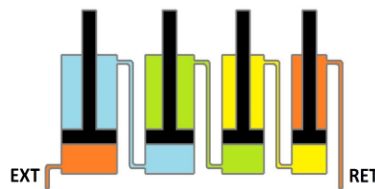
Part Code	Bore Size	Rod Size	Pin Size	Differential Force	Closed		Open		Description	Buckle Load
					Tonne	inch	mm	inch		
HP30A12	3"	1.5"	1"	2.41	24.25	616	36.25	921	Maximum Pressure: 3000psi (207 bar)	25.3
HP35A12	3.5"	1.75"		3.28						46.8
HP40A12	4"	50mm		4.15						74.9
HP45A12	4.5"	2"	1.25"	4.28	24.25	616	36.25	921	Ports 3/4" UNO	79.9
HP50A12	5"	55mm		5.02						109.7
HP55A12	5.5"	2.25"		5.42						128.0
HP60A12	6"	60mm		5.98						155.4

Specifications subject to change without notice. 2nd release - April 2023. Please consider rod buckle load cylinder force.

Bore Size	Rod Size	Cap Nut Dia. mm
3"	1.5"	100
3.5"	1.75"	115
4"	50mm	128
4.5"	2"	150
5"	55mm	165
5.5"	2.25"	178
6"	60mm	190



# HP Rephasing Cylinder Range - 1/2" Increment



## HP Rephasing Cylinder - 16" (406mm) Stroke

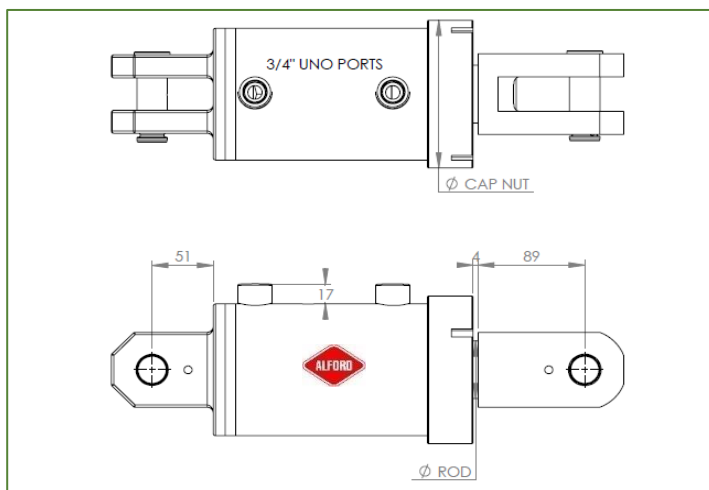
Part Code	Bore Size	Rod Size	Pin Size	Differential Force	Closed		Open		Description	Buckle Load	
					Tonne	inch	mm	inch			mm
HP30A16	3"	1.5"	1"	2.41	28.25	718	44.25	1124	Maximum Pressure: 3000psi (207 bar)	17.0	
HP35A16	3.5"	1.75"		3.28						31.5	
HP40A16	4"	50mm		4.15						50.3	
HP45A16	4.5"	2"	1.25"	4.28	30.25	768	48.25	1226		Ports 3/4" UNO	53.7
HP50A16	5"	55mm		5.02							73.7
HP55A16	5.5"	2.25"		5.42							85.9
HP60A16	6"	60mm		5.98					104.4		

## HP Rephasing Cylinder - 18" (457mm) Stroke

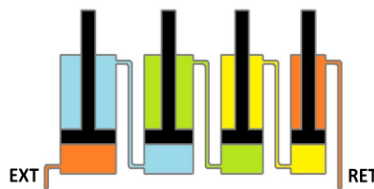
Part Code	Bore Size	Rod Size	Pin Size	Differential Force	Closed		Open		Description	Buckle Load	
					Tonne	inch	mm	inch			mm
HP30A18	3"	1.5"	1"	2.41	30.25	768	48.25	1226	Maximum Pressure: 3000psi (207 bar)	14.3	
HP35A18	3.5"	1.75"		3.28						26.5	
HP40A18	4"	50mm		4.15						42.3	
HP45A18	4.5"	2"	1.25"	4.28	30.25	768	48.25	1226		Ports 3/4" UNO	45.2
HP50A18	5"	55mm		5.02							62.0
HP55A18	5.5"	2.25"		5.42							72.4
HP60A18	6"	60mm		5.98					87.9		

Specifications subject to change without notice. 2nd release - April 2023. Please consider rod buckle load cylinder force.

Bore Size	Rod Size	Cap Nut Dia. mm
3"	1.5"	100
3.5"	1.75"	115
4"	50mm	128
4.5"	2"	150
5"	55mm	165
5.5"	2.25"	178
6"	60mm	190



# HP Rephasing Cylinder Range - 1/2" Increment



## HP Rephasing Cylinder - 24" (610mm) Stroke

Part Code	Bore Size	Rod Size	Pin Size	Differential Force	Closed		Open		Description	Buckle Load
					Tonne	inch	mm	inch		
HP30A24	3"	1.5"	1"	2.41	36.25	921	60.25	1530	Maximum Pressure: 3000psi (207 bar)	9.2
HP35A24	3.5"	1.75"		3.28						17.0
HP40A24	4"	50mm		4.15						27.1
HP45A24	4.5"	2"	1.25"	4.28	5.02	5.42	5.98	Ports 3/4" UNO		29.0
HP50A24	5"	55mm		39.8						
HP55A24	5.5"	2.25"		46.4						
HP60A24	6"	60mm		56.3						

## HP Rephasing Cylinder - 36" (914mm) Stroke

Part Code	Bore Size	Rod Size	Pin Size	Differential Force	Closed		Open		Description	Buckle Load
					Tonne	inch	mm	inch		
HP30A36	3"	1.5"	1"	2.41	48.25	1226	84.25	2140	Maximum Pressure: 3000psi (207 bar)	4.7
HP35A36	3.5"	1.75"		3.28						8.7
HP40A36	4"	50mm		4.15						13.9
HP45A36	4.5"	2"	1.25"	4.28	5.02	5.42	5.98	Ports 3/4" UNO		14.8
HP50A36	5"	55mm		20.3						
HP55A36	5.5"	2.25"		23.7						
HP60A36	6"	60mm		28.8						

Specifications subject to change without notice. 2nd release - April 2023. Please consider rod buckle load cylinder force.

Bore Size	Rod Size	Cap Nut Dia. mm
3"	1.5"	100
3.5"	1.75"	115
4"	50mm	128
4.5"	2"	150
5"	55mm	165
5.5"	2.25"	178
6"	60mm	190

