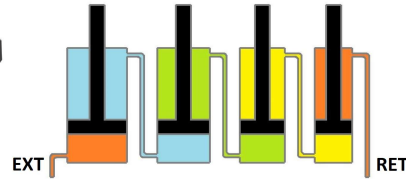


QP Rephasing Cylinder Range - 1/4" Increment



QP Rephasing Cylinder - 8" (203mm) Stroke

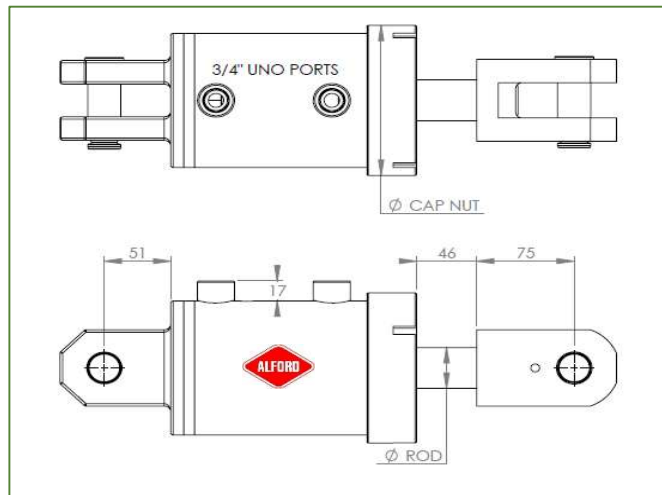
Part Code	Bore Size	Rod Size	Differential Force	Closed		Open		Description	Buckle Load
				Tonne	inch	mm	inch		
QP30A08	3"	1.5"	1.7	20.25	514	28.25	718	Maximum Pressure: 3000psi (207 bar)	41.7
QP32A08	3.25"	1.25"							20.1
QP35A08	3.5"	1.25"							20.1
QP37A08	3.75"	1.375"	2.0	20.25	514	28.25	718	Ports 3/4" UNO	29.5
QP40A08	4"								29.5
QP42A08	4.25"								29.5
QP45A08	4.5"	1.5"	2.4	20.25	514	28.25	718	Pins 1" (1.25" optional)	41.7
QP47A08	4.75"								41.7
QP50A08	5"								41.7

QP Rephasing Cylinder - 12" (305mm) Stroke

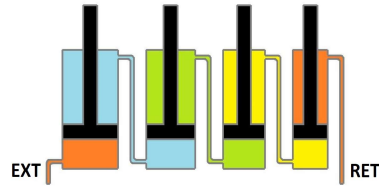
Part Code	Bore Size	Rod Size	Differential Force	Closed		Open		Description	Buckle Load
				Tonne	inch	mm	inch		
QP30A12	3"	1.5"	1.7	24.25	616	36.25	921	Maximum Pressure: 3000psi (207 bar)	25.3
QP32A12	3.25"	1.25"							12.2
QP35A12	3.5"	1.25"							12.2
QP37A12	3.75"	1.375"	2.0	24.25	616	36.25	921	Ports 3/4" UNO	17.9
QP40A12	4"								17.9
QP42A12	4.25"								17.9
QP45A12	4.5"	1.5"	2.4	24.25	616	36.25	921	Pins 1" (1.25" optional)	25.3
QP47A12	4.75"								25.3
QP50A12	5"								25.3

Specifications subject to change without notice. Version Date: August 2023. Please consider rod buckle load cylinder force.

Bore Size	Rod Size	Cap Nut Dia. mm
3"	1.5"	100
3.25"	1.25"	108
3.5"		115
3.75"	1.375"	120
4"		128
4.25"		135
4.5"	1.5"	150
4.75"		150
5"		165



QP Rephasing Cylinder Range - 1/4" Increment



QP Rephasing Cylinder - 16" (406mm) Stroke

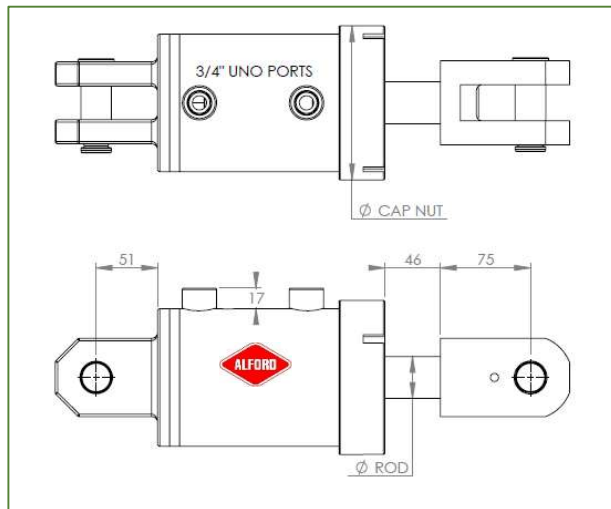
Part Code	Bore Size	Rod Size	Differential Force	Closed		Open		Description	Buckle Load
				Tonne	inch	mm	inch		
QP30A16	3"	1.5"	1.7	28.25	718	44.25	1124	Maximum Pressure: 3000psi (207 bar)	17
QP32A16	3.25"	1.25"							8.2
QP35A16	3.5"	1.25"							8.2
QP37A16	3.75"	1.375"	2.0	28.25	718	44.25	1124	Ports 3/4" UNO	12.0
QP40A16	4"								12.0
QP42A16	4.25"								12.0
QP45A16	4.5"	1.5"	2.4	28.25	718	44.25	1124	Pins 1" (1.25" optional)	17.0
QP47A16	4.75"								17.0
QP50A16	5"								17.0

QP Rephasing Cylinder - 18" (457mm) Stroke

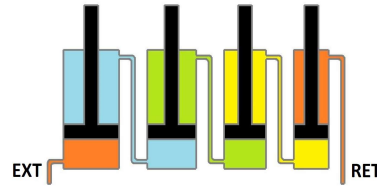
Part Code	Bore Size	Rod Size	Differential Force	Closed		Open		Description	Buckle Load
				Tonne	inch	mm	inch		
QP30A18	3"	1.5"	1.7	30.25	768	48.25	1226	Maximum Pressure: 3000psi (207 bar)	14.3
QP32A18	3.25"	1.25"							6.9
QP35A18	3.5"	1.25"							6.9
QP37A18	3.75"	1.375"	2.0	30.25	768	48.25	1226	Ports 3/4" UNO	10.1
QP40A18	4"								10.1
QP42A18	4.25"								10.1
QP45A18	4.5"	1.5"	2.4	30.25	768	48.25	1226	Pins 1" (1.25" optional)	14.3
QP47A18	4.75"								14.3
QP50A18	5"								14.3

Specifications subject to change without notice. Version Date: August 2023. Please consider rod buckle load cylinder force.

Bore Size	Rod Size	Cap Nut Dia. mm
3"	1.5"	100
3.25"	1.25"	108
3.5"		115
3.75"	1.375"	120
4"		128
4.25"		135
4.5"	1.5"	150
4.75"		150
5"		165



QP Rephasing Cylinder Range - 1/4" Increment



QP Rephasing Cylinder - 24" (610mm) Stroke

Part Code	Bore Size	Rod Size	Differential Force	Closed		Open		Description	Buckle Load
				Tonne	inch	mm	inch		
QP30A24	3"	1.5"	1.7	36.25	921	60.25	1530	Maximum Pressure: 3000psi (207 bar)	9.2
QP32A24	3.25"	1.25"							4.4
QP35A24	3.5"	1.25"							4.4
QP37A24	3.75"	1.375"	2.0	36.25	921	60.25	1530	Ports 3/4" UNO	6.5
QP40A24	4"								6.5
QP42A24	4.25"								6.5
QP45A24	4.5"	1.5"	2.4	36.25	921	60.25	1530	Pins 1" (1.25" optional)	9.2
QP47A24	4.75"								9.2
QP50A24	5"								9.2

QP Rephasing Cylinder - 36" (914mm) Stroke

Part Code	Bore Size	Rod Size	Differential Force	Closed		Open		Description	Buckle Load
				Tonne	inch	mm	inch		
QP30A36	3"	1.5"	1.7	48.25	1226	84.25	2140	Maximum Pressure: 3000psi (207 bar)	4.7
QP32A36	3.25"	1.25"							2.3
QP35A36	3.5"	1.25"							2.3
QP37A36	3.75"	1.375"	2.0	48.25	1226	84.25	2140	Ports 3/4" UNO	3.3
QP40A36	4"								3.3
QP42A36	4.25"								3.3
QP45A36	4.5"	1.5"	2.4	48.25	1226	84.25	2140	Pins 1" (1.25" optional)	4.7
QP47A36	4.75"								4.7
QP50A36	5"								4.7

Specifications subject to change without notice. Version Date: August 2023. Please consider rod buckle load cylinder force.

Bore Size	Rod Size	Cap Nut Dia. mm
3"	1.5"	100
3.25"	1.25"	108
3.5"		115
3.75"	1.375"	120
4"		128
4.25"		135
4.5"	1.5"	150
4.75"		150
5"		165

