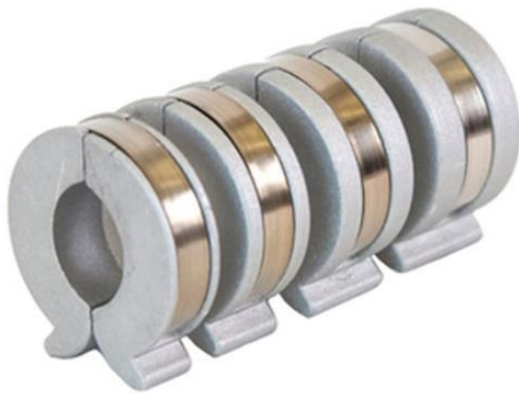




## Whoa-Stops – Stroke Control Segments

Whoa-Stop Stroke Control Segments are available in multiple sizes and are made of lightweight, high-strength material that never rusts. These durable segments are non-abrasive, won't score shafts or damage seals and protect the cylinder components.

A more positive alternative to cylinders with hydraulic depth control mechanisms, Whoa-Stops provide a greater range of control, require less maintenance, are more reliable, and far less expensive. Appropriate for agricultural and industrial applications.



### Part Code: 9697

#### Features:

- Aluminium cast material for non-mar fitment.
- Stainless steel flat spring
- Winged design to ease fitment.
- Shaft size 1.750" to 2.00"
- Pack of 4 x segments
- 1 of each width - 1", 1.5", 2" & 4.25"



### Part Code: 9899

#### Features:

- Aluminium cast material for non-mar fitment
- Stainless steel flat spring
- Winged design to ease fitment.
- Shaft size 1.128" to 1.50"
- Pack of 4 x segments
- 1 of each width - 0.875", 1.00", 1.250" & 1.500"